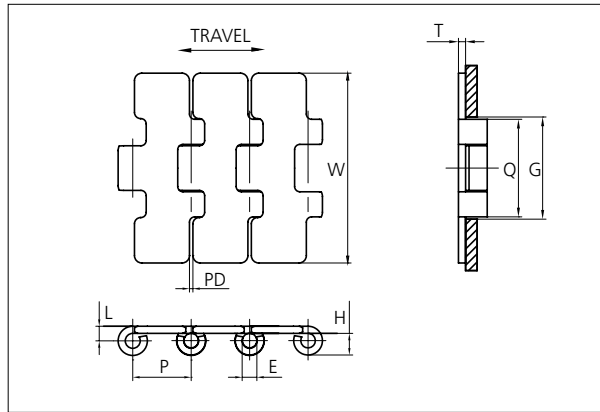


Slat Top Stainless Steel Chain

Series **uni 512 PLUS⁺** Type **Single Hinge**



Slat Top Stainless Steel Chain

Straight running chain
Pitch: 25.4 mm (1.00 in)
Backflex radius:
100.0 mm (3.94 in)

Standard shipping lengths:
coils of 80 in,
3.048 m (10.0 ft)

NON STANDARD

E		G		H		L		P		Q		T		PD	
mm	in	mm	in	mm	in	mm	in	mm	in	mm	in	mm	in	mm	in
6.4	0.25	44.5	1.75	9.7	0.38	6.5	0.26	25.4	1.00	42.3	1.67	3.1	0.12	1.6	0.06

STRAIGHT RUNNING

	Width (W)		Weight		Permissible tensile strength N/lbf	Chain material	Pin material*	Surface	
	mm	in	kg/m	lb/ft				Roughness	Hardness
K197	50.0	1.97	2.20	1.48	3000 / 674	S420 35 (Special Work hardened Crome-nickel ferritic Stainless Steel)	AISI 431 (Work hardened magnetic Stainless Steel)	< 0.3 µm	30 HRC
K217	55.0	2.17	2.29	1.54					
K236	60.0	2.36	2.41	1.62					
K250	63.5	2.50	2.49	1.67					
K283	72.0	2.83	2.65	1.78					
K325	82.6	3.25	2.86	1.92					
K350	88.9	3.50	3.01	2.02					
K400	101.6	4.00	3.26	2.19					

PITCH 38.1 MM/1.50 IN

* Chains with special hardened pin (HP) for additional wear resistance and higher corrosion strength are made to order.

Any questions? Please contact us.

Morskate Aandrijvingen BV

Oosterveldsingel 47A
7558 PJ Hengelo (Ov)
The Netherlands

NL

T +31 (0)74 - 760 11 11
info@morskateaandrijvingen.nl
www.morskateaandrijvingen.nl


DE

T +49 692 - 222 34 95
info@morskateantriebstechnik.de
www.morskateantriebstechnik.de

EN

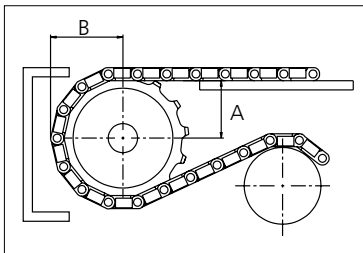
T +31 (0)74 - 760 11 11
info@morskatedrivetechnology.com
www.morskatedrivetechnology.com

Sprocket

No. of teeth	Pitch diameter		Overall diameter		Min. \varnothing bore		Max. \varnothing bore		Dimension A		Dimension B		 Machined PA6
	mm	in	mm	in	mm	in	mm	in	mm	in	mm	in	
Z19	78.2	3.08	76.0	2.99	20	0.8	40	1.6	67.7	2.67	81.9	3.22	✓
Z21	86.2	3.39	84.0	3.31	20	0.8	50	2.0	76.0	2.99	90.2	3.55	✓
Z23	94.1	3.71	93.0	3.66	20	0.8	60	2.4	84.4	3.32	98.5	3.88	✓
Z25	102.1	4.02	101.0	3.97	20	0.8	70	2.8	92.6	3.65	106.7	4.20	✓
Z27	110.1	4.34	109.0	4.29	20	0.8	80	3.1	100.9	3.97	115.0	4.53	✓
Z29	118.2	4.65	118.0	4.65	20	0.8	90	3.5	109.1	4.30	123.2	4.85	✓
Z31	126.2	4.97	127.0	5.00	20	0.8	90	3.5	117.3	4.62	131.4	5.17	✓
Z33	134.2	5.28	135.0	5.31	20	0.8	100	3.9	125.5	4.94	139.5	5.49	✓

Non standard material and color:
See uni Material and Color Overview.

Machined sprocket



Please ensure that sufficient size shaft and keyway are chosen for corresponding load.

Other sprocket sizes are available upon request

Width of tooth: 42.3 mm/1.67 in

Width of sprocket: 42.3 mm/1.67 in

uni Retainer Rings: See uni Retainer Ring data sheet

uni Idler: See uni Idler data sheet

uni Guide Rings can be mounted on cast iron and machined sprockets. See uni Guide Rings data sheet

Any questions? Please contact us.

Morskate Aandrijvingen BV

Oosterveldsingel 47A
7558 PJ Hengelo (Ov)
The Netherlands

NL

T +31 (0)74 - 760 11 11
info@morskateaandrijvingen.nl
www.morskateaandrijvingen.nl

DE

T +49 692 - 222 34 95
info@morskateantriebstechnik.de
www.morskateantriebstechnik.de

EN

T +31 (0)74 - 760 11 11
info@morskatedrivetechnology.com
www.morskatedrivetechnology.com