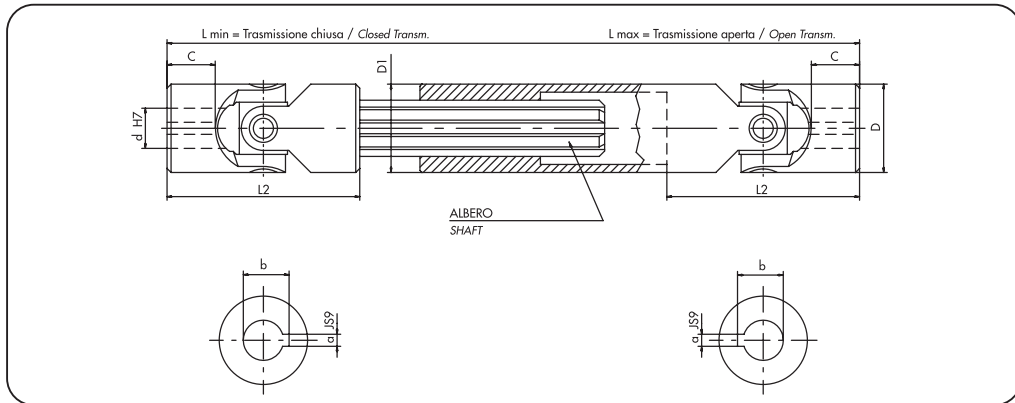
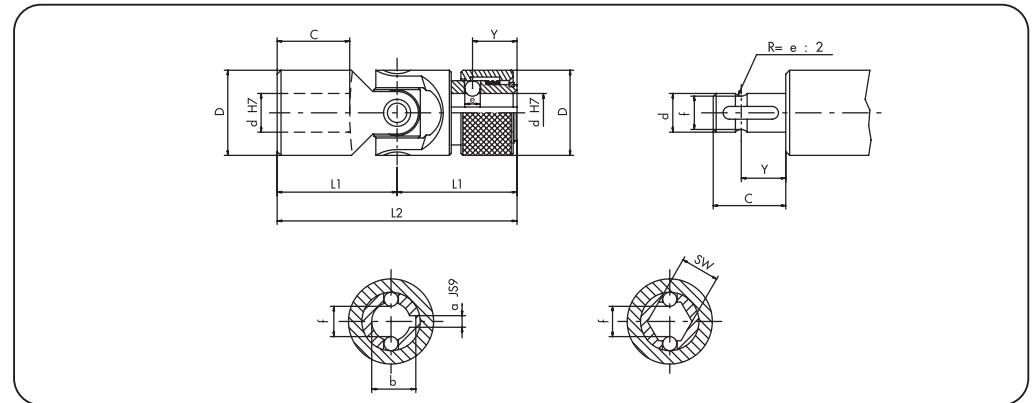


- Giunti serie «G» con bussole di scorrimento anti-usura.  
Joints series «G» with wear resistant sliding bushes.
- Completi di cave per linguetta.  
Complete with keyways.
- Ampia gamma di lunghezze per ogni modello.  
Wide range of lengths per model.
- Consegna pronta.  
Ready delivery.



- Giri max. 4000/min.  
Max. speed 4000 R.P.M.
- Angolo max. 45°  
Max. angle 45°



Mod. Type	Codice / Code	d	D	L2	C	L min.	L max.	corsa stroke	a	b	Albero Shaft	D1	Peso Weight Kg
03GA1	SGOA 1010	10	22	48	12	140	170	30	3	11,4	11 x 14 Z6	22	0,31
03GA15	SGOA 1015	10	22	48	12	160	200	40	3	11,4	11 x 14 Z6	22	0,36
03GA2	SGOA 1020	10	22	48	12	180	240	60	3	11,4	11 x 14 Z6	22	0,38
03GA25	SGOA 1025	10	22	48	12	230	330	100	3	11,4	11 x 14 Z6	22	0,50
04GA1	SGOA 1210	12	25	56	13	160	190	30	4	13,8	13 x 16 Z6	26	0,50
04GA15	SGOA 1215	12	25	56	13	180	225	45	4	13,8	13 x 16 Z6	26	0,56
04GA2	SGOA 1220	12	25	56	13	200	270	70	4	13,8	13 x 16 Z6	26	0,62
04GA23	SGOA 1223	12	25	56	13	220	300	80	4	13,8	13 x 16 Z6	26	0,67
04GA26	SGOA 1226	12	25	56	13	250	355	105	4	13,8	13 x 16 Z6	26	0,76
04GA29	SGOA 1229	12	25	56	13	280	420	140	4	13,8	13 x 16 Z6	26	0,84
04GA32	SGOA 1232	12	25	56	13	300	450	150	4	13,8	13 x 16 Z6	26	0,90
05GA1	SGOA 1410	14	28	60	14	170	200	30	5	16,3	13 x 16 Z6	29	0,62
05GA15	SGOA 1415	14	28	60	14	180	220	40	5	16,3	13 x 16 Z6	29	0,64
05GA18	SGOA 1418	14	28	60	14	200	260	60	5	16,3	13 x 16 Z6	29	0,72
05GA2	SGOA 1420	14	28	60	14	220	300	80	5	16,3	13 x 16 Z6	29	0,78
05GA23	SGOA 1423	14	28	60	14	250	350	100	5	16,3	13 x 16 Z6	29	0,87
05GA26	SGOA 1426	14	28	60	14	280	420	140	5	16,3	13 x 16 Z6	29	0,96

Mod. Type	d	D	L2	L1	C	Y	e	f	Codice / Code	a	b	Codice / Code	SW
—	—	—	—	—	—	—	—	—	—	—	—	—	—
03HR	10	22	62	31	17	11,5	4	8,7 (8)	SHOR 101C	3	11	SHOR 10SW	10 (9,06)
04HR	12	25	74	37	21	13,5	4	11 (10,5)	SHOR 121C	4	13,3	SHOR 12SW	12 (11,15)
05HR	14	25	74	37	21	13,5	4	13	SHOR 141C	5	15,3	SHOR 14SW	14
1HR	16	32	86	43	24	14	6,35	14,8	SHOR 161C	5	17,3	SHOR 16SW	16
2HR	18	36	96	48	28	19	8	16	SHOR 181C	6	19,8	SHOR 18SW	18
3HR	20	42	108	54	31	19	8	18	SHOR 201C	6	22,8	SHOR 20SW	20
4HR	22	45	120	60	34	20,5	10	20	SHOR 221C	6	24,8	SHOR 22SW	22
5HR	25	50	132	66	38	20,5	10	23	SHOR 251C	8	28,3	SHOR 25SW	25
6HR	30	58	166	83	49	25	10	28	SHOR 301C	8	33,3	SHOR 30SW	30



# TRASMISSIONI ALLUNGABILI ALTA VELOCITÀ

EXTENSIBLE TRANSMISSIONS  
HIGH SPEED

serie «H»  
series (DIN 808)

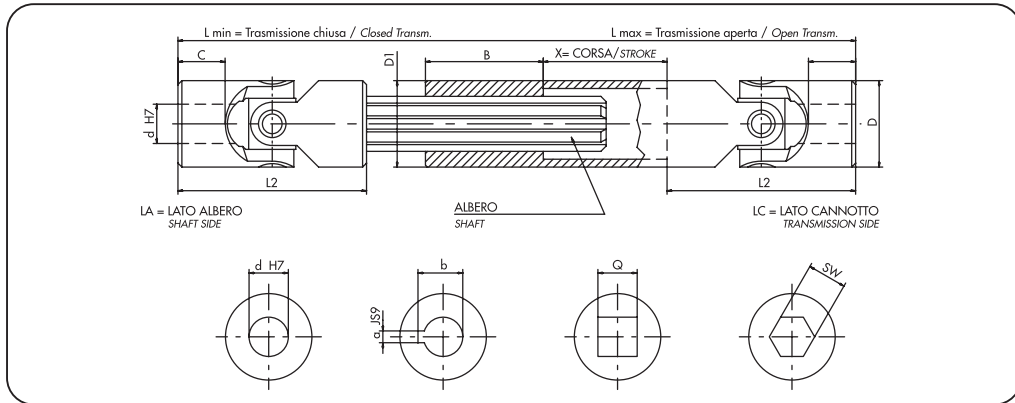
● Giunti serie «H» alta velocità con cuscinetti a rullini.  
High speed joints series «H» with needle roller bearings.

● Lunghezze min. e max. a richiesta:  
Min. and max. lengths on request:

$$L. MIN. > \frac{L. MAX. + 2 L2 + B}{2} \quad \text{CORSA X} < \frac{L. MAX. - 2 L2 - B}{2}$$

MIN. L. STROKE X

● Esecuzioni speciali a richiesta.  
Special executions on request.



# TRASMISSIONI ALLUNGABILI STANDARD

STANDARD EXTENSIBLE TRANSMISSIONS

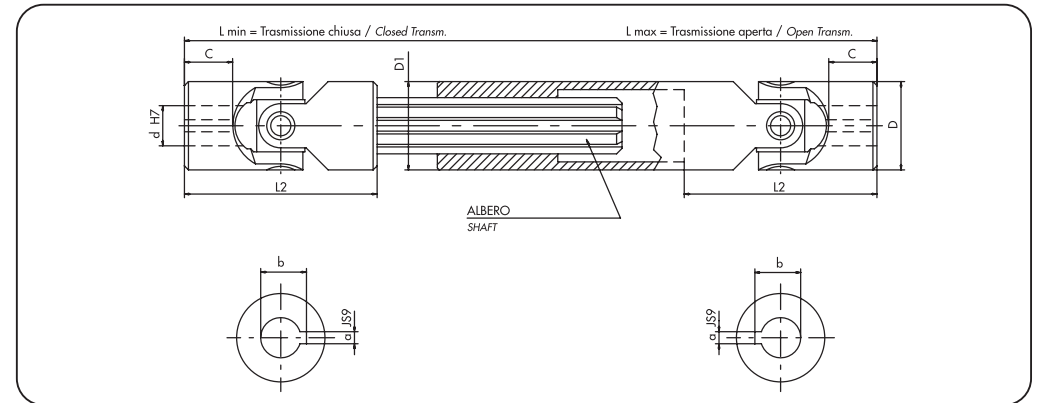
serie «G»  
series (DIN 808)

● Giunti serie «G» con bussole di scorrimento anti-usura.  
Joints series «G» with wear resistant sliding bushes.

● Completati di cave per linguetta.  
Complete with keyways.

● Ampia gamma di lunghezze per ogni modello.  
Wide range of lengths per model.

● Consegna pronta.  
Ready delivery.



Mod. Type	d	D	L2	C	L min.	L max.	x	B	a	b	Q	SW	Albero Shaft	D1
					a richiesta - on request									
03HA	10	22	48	12	←	→	—	30	3	11,4	10	10	11 x 14 Z6	22
04HA	12	25	56	13	←	→	—	40	4	13,8	12	12	13 x 16 Z6	26
05HA	14	28	60	14	←	→	—	40	5	16,3	14	14	13 x 16 Z6	29
1HA	16	32	68	16	←	→	—	40	5	18,3	16	16	16 x 20 Z6	32
2HA	18	36	74	17	←	→	—	40	6	20,8	18	18	18 x 22 Z6	37
3HA	20	42	82	18	←	→	—	45	6	22,8	20	20	21 x 25 Z6	42
4HA	22	45	95	22	←	→	—	45	6	24,8	22	22	23 x 28 Z6	47
5HA	25	50	108	26	←	→	—	45	8	28,3	25	25	26 x 32 Z6	52
6HA	30	58	122	29	←	→	—	50	8	33,3	30	30	32 x 38 Z8	58
7HA	35	70	140	35	←	→	—	70	10	38,3	**	**	36 x 42 Z8	70
8HA	40	80	160	39	←	→	—	80	12	43,3	**	**	42 x 48 Z8	80
9HA	50	95	190	46	←	→	—	90	14	53,8	**	**	46 x 54 Z8	95
04HBA	12	22	62	18	←	→	—	30	4	13,8	10	10	11 x 14 Z6	22
1HBA	16	25	74	21	←	→	—	40	5	18,3	12	12	13 x 16 Z6	26
3HBA	20	32	86	24	←	→	—	40	6	22,8	16	16	16 x 20 Z6	32
5HBA	25	42	108	31	←	→	—	45	8	28,3	20	20	21 x 25 Z6	42
6HBA	30	50	132	38	←	→	—	45	8	33,3	25	25	26 x 32 Z6	52
8HBA	40	70	166	47	←	→	—	70	12	43,3	**	**	36 x 42 Z8	70

Criteria di scelta pag. - Selection criteria page 27

\*\* = A richiesta / On request

Mod. Type	Codice / Code	d	D	L2	C	L min.	L max.	corsa stroke	a	b	Albero Shaft	D1	Peso Weight Kg
05GA29	SGOA 1429	14	28	60	14	300	450	150	5	16,3	13 x 16 Z6	29	1,03
05GA32	SGOA 1432	14	28	60	14	350	550	200	5	16,3	13 x 16 Z6	29	1,17
05GA35	SGOA 1435	14	28	60	14	400	650	250	5	16,3	13 x 16 Z6	29	1,33
1GA1	SGOA 1610	16	32	68	16	190	220	30	5	18,3	16 x 20 Z6	32	0,90
1GA15	SGOA 1615	16	32	68	16	210	250	40	5	18,3	16 x 20 Z6	32	0,98
1GA2	SGOA 1620	16	32	68	16	240	320	80	5	18,3	16 x 20 Z6	32	1,10
1GA23	SGOA 1623	16	32	68	16	250	350	100	5	18,3	16 x 20 Z6	32	1,14
1GA26	SGOA 1626	16	32	68	16	275	390	115	5	18,3	16 x 20 Z6	32	1,24
1GA29	SGOA 1629	16	32	68	16	300	430	130	5	18,3	16 x 20 Z6	32	1,33
1GA32	SGOA 1632	16	32	68	16	380	590	210	5	18,3	16 x 20 Z6	32	1,60
1GA35	SGOA 1635	16	32	68	16	400	630	230	5	18,3	16 x 20 Z6	32	1,73
2GA1	SGOA 1810	18	36	74	17	230	280	50	6	20,8	18 x 22 Z6	37	1,35
2GA15	SGOA 1815	18	36	74	17	250	320	70	6	20,8	18 x 22 Z6	37	1,46
2GA18	SGOA 1818	18	36	74	17	270	370	100	6	20,8	18 x 22 Z6	37	1,55
2GA2	SGOA 1820	18	36	74	17	290	400	110	6	20,8	18 x 22 Z6	37	1,66
2GA23	SGOA 1823	18	36	74	17	300	415	115	6	20,8	18 x 22 Z6	37	1,71
2GA26	SGOA 1826	18	36	74	17	400	620	220	6	20,8	18 x 22 Z6	37	2,23

Criteria di scelta pag. - Selection criteria page 27

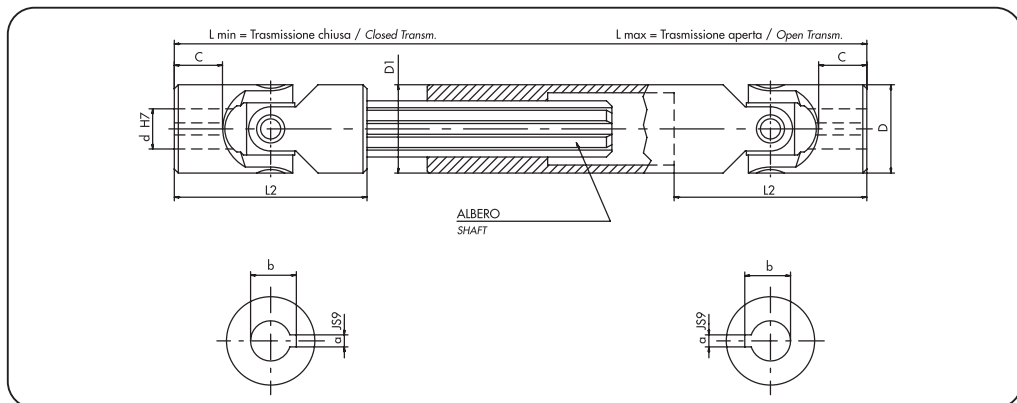


# TRASMISSIONI ALLUNGABILI STANDARD

STANDARD EXTENSIBLE TRANSMISSIONS

serie «G»  
series (DIN 808)

- Giunti serie «G» con bussole di scorrimento anti-usura.  
Joints series «G» with wear resistant sliding bushes.
- Completi di cave per linguetta.  
Complete with keyways.
- Ampia gamma di lunghezze per ogni modello.  
Wide range of lengths per model.
- Consegna pronta.  
Ready delivery.

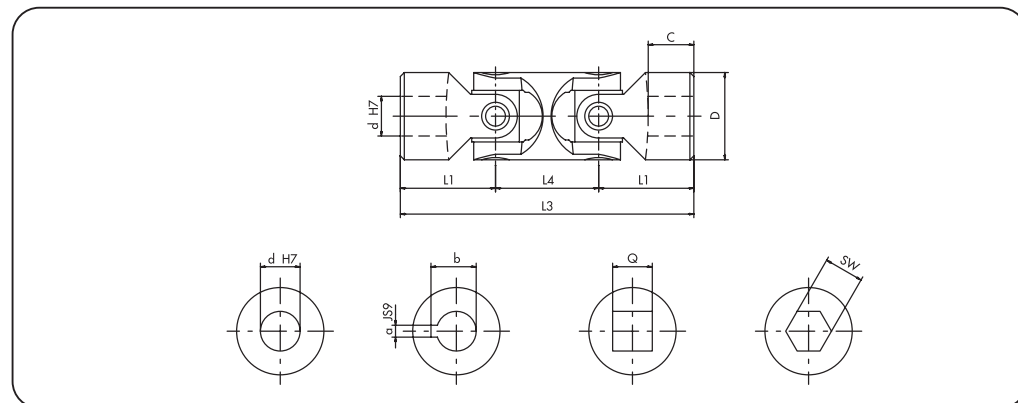


# GIUNTI DOPPI ALTA VELOCITÀ CON CUSCINETTI A RULLINI

HIGH SPEED DOUBLE JOINTS WITH NEEDLE ROLLER BEARINGS

serie «H»  
series (DIN 808)

- Cuscinetti a rullini lubrificati a vita. Nessuna manutenzione.  
Roller bearings lubricated for life. No maintenance required.
- Precisi e versatili, silenziosi e scorrevoli; vasto campo di applicazione.  
Precise and versatile, silent and smooth running; wide application field.
- Angolo max 90°. Giri max. 4000/min.  
Max angle 90°. Max speed 4000 R.P.M.
- "HD" corrispondenti DIN 808 - "HBD" corrispondenti DIN 808/7551  
"HD" to DIN 808 - "HBD" to DIN 808/7551
- Esecuzioni speciali a richiesta.  
Special executions on request.



Mod. Type	Codice / Code	d	D	L2	C	L min.	L max.	corsa stroke	a	b	Albero Shaft	D1	Peso Weight Kg
2GA29	SGOA 1829	18	36	74	17	500	820	320	6	20,8	18 x 22 Z6	37	2,75
3GA1	SGOA 2010	20	42	82	18	250	300	50	6	22,8	21 x 25 Z6	42	1,99
3GA15	SGOA 2015	20	42	82	18	270	340	70	6	22,8	21 x 25 Z6	42	2,12
3GA18	SGOA 2018	20	42	82	18	290	380	90	6	22,8	21 x 25 Z6	42	2,25
3GA2	SGOA 2020	20	42	82	18	320	440	120	6	22,8	21 x 25 Z6	42	2,46
3GA23	SGOA 2023	20	42	82	18	380	560	180	6	22,8	21 x 25 Z6	42	2,86
3GA26	SGOA 2026	20	42	82	18	420	640	220	6	22,8	21 x 25 Z6	42	3,13
3GA29	SGOA 2029	20	42	82	18	500	800	300	6	22,8	21 x 25 Z6	42	3,66
4GA05	SGOA 2205	22	45	95	22	250	280	30	6	24,8	23 x 28 Z6	47	2,35
4GA1	SGOA 2210	22	45	95	22	270	320	50	6	24,8	23 x 28 Z6	47	2,51
4GA15	SGOA 2215	22	45	95	22	290	350	60	6	24,8	23 x 28 Z6	47	2,67
4GA2	SGOA 2220	22	45	95	22	330	430	100	6	24,8	23 x 28 Z6	47	3,00
4GA23	SGOA 2223	22	45	95	22	350	470	120	6	24,8	23 x 28 Z6	47	3,16
4GA26	SGOA 2226	22	45	95	22	470	710	240	6	24,8	23 x 28 Z6	47	4,13
5GA1	SGOA 2510	25	50	108	26	295	345	50	8	28,3	26 x 32 Z6	52	3,39
5GA15	SGOA 2515	25	50	108	26	310	375	65	8	28,3	26 x 32 Z6	52	3,52
5GA2	SGOA 2520	25	50	108	26	350	450	100	8	28,3	26 x 32 Z6	52	3,92

Mod. Type	Codice / Code	d	D	L3	L1	L4	C	Codice / Code	Codice / Code	a	b	Codice / Code	Q	* SW	Peso Weight Kg
03HD	SHOD 1000	10	22	74	24	26	12	SHOD 101C	SHOD 102C	3	11,4	SHOD 102Q	10	10	0,15
04HD	SHOD 1200	12	25	86	28	30	13	SHOD 121C	SHOD 122C	4	13,8	SHOD 122Q	12	12	0,25
05HD	SHOD 1400	14	28	96	30	36	14	SHOD 141C	SHOD 142C	5	16,3	SHOD 142Q	14	14	0,40
1HD	SHOD 1600	16	32	104	34	36	16	SHOD 161C	SHOD 162C	5	18,3	SHOD 162Q	16	16	0,45
2HD	SHOD 1800	18	36	114	37	40	17	SHOD 181C	SHOD 182C	6	20,8	SHOD 182Q	18	18	0,70
3HD	SHOD 2000	20	42	128	41	46	18	SHOD 201C	SHOD 202C	6	22,8	SHOD 202Q	20	20	1,00
4HD	SHOD 2200	22	45	145	47,5	50	22	SHOD 221C	SHOD 222C	6	24,8	SHOD 222Q	22	22	1,55
5HD	SHOD 2500	25	50	163	54	55	26	SHOD 251C	SHOD 252C	8	28,3	SHOD 252Q	25	25	2,00
6HD	SHOD 3000	30	58	190	61	68	29	SHOD 301C	SHOD 302C	8	33,3	SHOD 302Q	30	30	2,90
6HD1	SHOD 3200	32	58	198	65	68	33	SHOD 321C	SHOD 322C	10	35,3	SHOD 322Q	30	30	3,00
7HD	SHOD 3500	35	70	212	70	72	35	SHOD 351C	SHOD 352C	10	38,3	—	**	**	4,75
8HD	SHOD 4000	40	80	245	80	85	39	SHOD 401C	SHOD 402C	12	43,3	—	**	**	7,20
9HD	SHOD 5000	50	95	290	95	100	46	SHOD 501C	SHOD 502C	14	53,8	—	**	**	12,00
04HBD	SHBD 1200	12	22	88	31	26	18	SHBD 121C	SHBD 122C	4	13,8	SHBD 102Q	10	10	0,20
1HBD	SHBD 1600	16	25	104	37	30	21	SHBD 161C	SHBD 162C	5	18,3	SHBD 122Q	12	12	0,30
3HBD	SHBD 2000	20	32	124	43	38	24	SHBD 201C	SHBD 202C	6	22,8	SHBD 162Q	16	16	0,50
5HBD	SHBD 2500	25	42	156	54	48	31	SHBD 251C	SHBD 252C	8	28,3	SHBD 202Q	20	20	1,20
6HBD	SHBD 3000	30	50	188	66	56	38	SHBD 301C	SHBD 302C	8	33,3	SHBD 252Q	25	25	1,70
8HBD	SHBD 4000	40	70	238	83	72	47	SHBD 401C	SHBD 402C	12	43,3	—	**	**	4,30

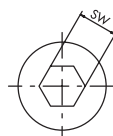
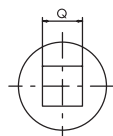
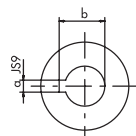
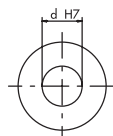
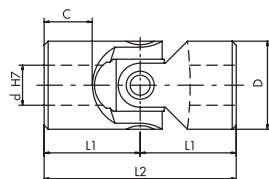


# GIUNTI SINGOLI ALTA VELOCITÀ CON CUSCINETTI A RULLINI

HIGH SPEED SINGLE JOINTS WITH NEEDLE ROLLER BEARINGS

serie «H»  
series (DIN 808)

- Cuscinetti a rullini lubrificati a vita. Nessuna manutenzione.  
*Roller bearings lubricated for life. No maintenance required.*
- Precisi e versatili, silenziosi e scorrevoli; vasto campo di applicazione.  
*Precise and versatile, silent and smooth running; wide application field.*
- Angolo max 45°. Giri max. 4000/min.  
*Max angle 45°. Max speed 4000 R.P.M.*
- "H" corrispondenti DIN 808 - "HB" corrispondenti DIN 808/7551  
*"H" to DIN 808 - "HB" to DIN 808/7551*
- Esecuzioni speciali a richiesta.  
*Special executions on request.*



Mod. Type	Codice / Code	d	D	L2	L1	C	Codice / Code	Codice / Code	a	b	Codice / Code	Q	SW	Peso Weight Kg
03H	SHOS 1000	10	22	48	24	12	SHOS 101C	SHOS 102C	3	11,4	SHOS 102Q	10	10	0,10
04H	SHOS 1200	12	25	56	28	13	SHOS 121C	SHOS 122C	4	13,8	SHOS 122Q	12	12	0,16
05H	SHOS 1400	14	28	60	30	14	SHOS 141C	SHOS 142C	5	16,3	SHOS 142Q	14	14	0,20
1H	SHOS 1600	16	32	68	34	16	SHOS 161C	SHOS 162C	5	18,3	SHOS 162Q	16	16	0,30
2H	SHOS 1800	18	36	74	37	17	SHOS 181C	SHOS 182C	6	20,8	SHOS 182Q	18	18	0,45
3H	SHOS 2000	20	42	82	41	18	SHOS 201C	SHOS 202C	6	22,8	SHOS 202Q	20	20	0,60
4H	SHOS 2200	22	45	95	47,5	22	SHOS 221C	SHOS 222C	6	24,8	SHOS 222Q	22	22	0,95
5H	SHOS 2500	25	50	108	54	26	SHOS 251C	SHOS 252C	8	28,3	SHOS 252Q	25	25	1,20
6H	SHOS 3000	30	58	122	61	29	SHOS 301C	SHOS 302C	8	33,3	SHOS 302Q	30	30	1,85
6H1	SHOS 3200	32	58	130	65	33	SHOS 321C	SHOS 322C	10	35,3	SHOS 322Q	30	30	2,00
7H	SHOS 3500	35	70	140	70	35	SHOS 351C	SHOS 352C	10	38,3	—	**	**	3,15
8H	SHOS 4000	40	80	160	80	39	SHOS 401C	SHOS 402C	12	43,3	—	**	**	4,60
9H	SHOS 5000	50	95	190	95	46	SHOS 501C	SHOS 502C	14	53,8	—	**	**	7,60
04HB	SHBS 1200	12	22	62	31	18	SHBS 121C	SHBS 122C	4	13,8	SHBS 102Q	10	10	0,12
1HB	SHBS 1600	16	25	74	37	21	SHBS 161C	SHBS 162C	5	18,3	SHBS 122Q	12	12	0,20
3HB	SHBS 2000	20	32	86	43	24	SHBS 201C	SHBS 202C	6	22,8	SHBS 162Q	16	16	0,35
5HB	SHBS 2500	25	42	108	54	31	SHBS 251C	SHBS 252C	8	28,3	SHBS 202Q	20	20	0,80
6HB	SHBS 3000	30	50	132	66	38	SHBS 301C	SHBS 302C	8	33,3	SHBS 252Q	25	25	1,20
8HB	SHBS 4000	40	70	166	83	47	SHBS 401C	SHBS 402C	12	43,3	—	**	**	2,90

Criteria di scelta pag. - Selection criteria page 27

\*\* Non sempre disponibile a magazzino / Not always available in stock

\*\* = A richiesta / On request

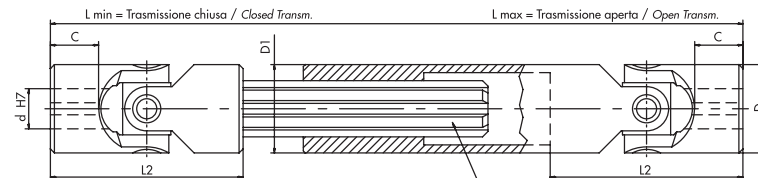


# TRASMISSIONI ALLUNGABILI STANDARD

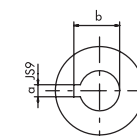
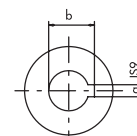
STANDARD EXTENSIBLE TRANSMISSIONS

serie «G»  
series (DIN 808)

- Giunti serie «G» con bussole di scorrimento anti-usura.  
*Joints series «G» with wear resistant sliding bushes.*
- Completi di cave per linguetta.  
*Complete with keyways.*
- Ampia gamma di lunghezze per ogni modello.  
*Wide range of lengths per model.*
- Consegna pronta.  
*Ready delivery.*



ALBERO  
SHAFT



Mod. Type	Codice / Code	d	D	L2	C	L min.	L max.	corsa stroke	a	b	Albero Shaft	D1	Peso Weight Kg
5GA23	SGOA 2523	25	50	108	26	380	500	120	8	28,3	26 x 32 Z6	52	4,20
5GA26	SGOA 2526	25	50	108	26	420	590	170	8	28,3	26 x 32 Z6	52	4,59
5GA29	SGOA 2529	25	50	108	26	460	660	200	8	28,3	26 x 32 Z6	52	4,98
5GA32	SGOA 2532	25	50	108	26	500	745	245	8	28,3	26 x 32 Z6	52	5,37
6GA1	SGOA 3010	30	58	122	29	330	380	50	8	33,3	32 x 38 Z8	58	4,90
6GA15	SGOA 3015	30	58	122	29	350	420	70	8	33,3	32 x 38 Z8	58	5,17
6GA18	SGOA 3018	30	58	122	29	370	455	85	8	33,3	32 x 38 Z8	58	5,42
6GA2	SGOA 3020	30	58	122	29	400	510	110	8	33,3	32 x 38 Z8	58	5,85
6GA23	SGOA 3023	30	58	122	29	450	620	170	8	33,3	32 x 38 Z8	58	6,48
6GA26	SGOA 3026	30	58	122	29	500	720	220	8	33,3	32 x 38 Z8	58	7,14
6GA29	SGOA 3029	30	58	122	29	540	795	255	8	33,3	32 x 38 Z8	58	7,69

Criteria di scelta pag. - Selection criteria page 27



# TRASMISSIONI ALLUNGABILI

EXTENSIBLE TRANSMISSIONS

serie «G»  
series (DIN 808)

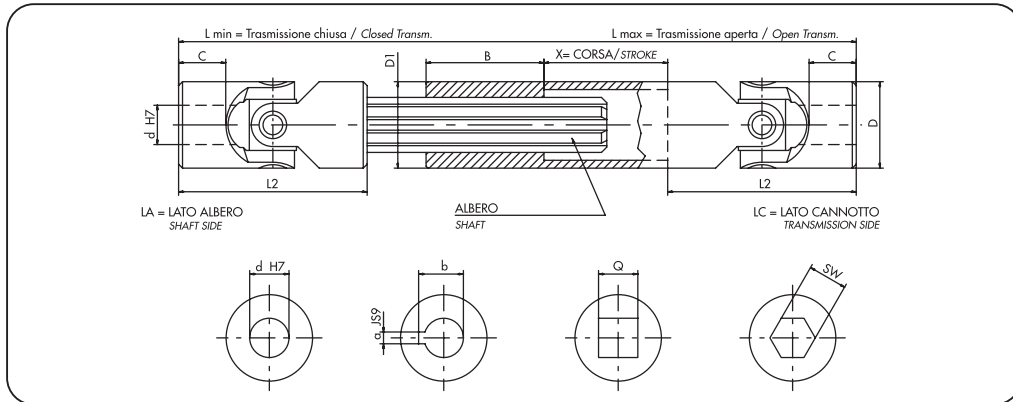
- Giunti serie «G» con bussole di scorrimento anti-usura.  
Joints series «G» with wear resistant sliding bushes.

- Lunghezze min. e max. a richiesta:  
Min. and max. lengths on request:

$$\text{L. MIN.} > \frac{\text{L. MAX.} + 2 \text{ L2} + \text{B}}{2} \quad \text{CORSA X} < \frac{\text{L. MAX.} - 2 \text{ L2} - \text{B}}{2}$$

MIN. L. STROKE X

- Esecuzioni speciali a richiesta.  
Special executions on request.

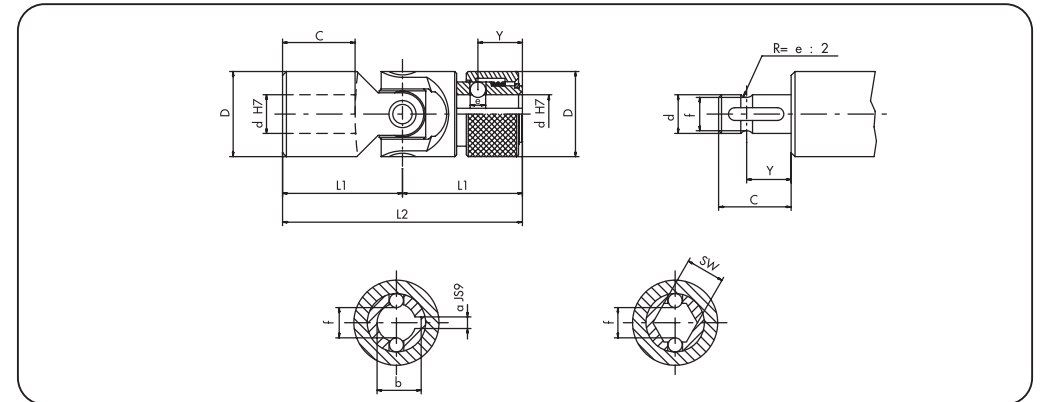


# GIUNTI SINGOLI - INNESTO RAPIDO

Mod. GR: Bussole di Scorrimento  
SINGLE JOINTS - QUICK RELEASE  
Type GR: Sliding Bushes

serie «G»  
series (DIN 808)

- Giri max. 1000/min.  
Max speed 1000 R.P.M.
- Angolo max. 45°  
Max. angle 45°



Mod. Type	d	D	L2	C	L min.	L max.	x	B	a	b	Q	SW	Albero Shaft	D1
					a richiesta - on request									
01GA	6	16	34	8	←	→	—	25	2	7	6	6	SW 8	16
02GA	8	16	40	11	←	→	—	25	2	9	8	8	SW 8	16
03GA	10	22	48	12	←	→	—	30	3	11,4	10	10	11 x 14 Z6	22
04GA	12	25	56	13	←	→	—	40	4	13,8	12	12	13 x 16 Z6	26
05GA	14	28	60	14	←	→	—	40	5	16,3	14	14	13 x 16 Z6	29
1GA	16	32	68	16	←	→	—	40	5	18,3	16	16	16 x 20 Z6	32
2GA	18	36	74	17	←	→	—	40	6	20,8	18	18	18 x 22 Z6	37
3GA	20	42	82	18	←	→	—	45	6	22,8	20	20	21 x 25 Z6	42
4GA	22	45	95	22	←	→	—	45	6	24,8	22	22	23 x 28 Z6	47
5GA	25	50	108	26	←	→	—	45	8	28,3	25	25	26 x 32 Z6	52
6GA	30	58	122	29	←	→	—	50	8	33,3	30	30	32 x 38 Z8	58
7GA	35	70	140	35	←	→	—	70	10	38,3	**	**	36 x 42 Z8	70
8GA	40	80	160	39	←	→	—	80	12	43,3	**	**	42 x 48 Z8	80
9GA	50	95	190	46	←	→	—	90	14	53,8	**	**	46 x 54 Z8	95
03GBA	10	16	52	15	←	→	—	25	3	11,4	8	8	SW 8	16
04GBA	12	22	62	18	←	→	—	30	4	13,8	10	10	11 x 14 Z6	22
1GBA	16	25	74	21	←	→	—	40	5	18,3	12	12	13 x 16 Z6	26
3GBA	20	32	86	24	←	→	—	40	6	22,8	16	16	16 x 20 Z6	32
5GBA	25	42	108	31	←	→	—	45	8	28,3	20	20	21 x 25 Z6	42
6GBA	30	50	132	38	←	→	—	45	8	33,3	25	25	26 x 32 Z6	52
8GBA	40	70	166	47	←	→	—	70	12	43,3	**	**	36 x 42 Z8	70

Criteria di scelta pag. - Selection criteria page 27

\*\* = A richiesta / On request

Mod. Type	d	D	L2	L1	C	Y	e	f	Codice / Code	a	b	Codice / Code	SW
02GR	8	16	52	26	14	9,5	3,5	6,3	SGOR 081C	2	9	SGOR 08SW	8
03GR	10	22	62	31	17	11,5	4	8,7 (8)	SGOR 101C	3	11	SGOR 10SW	10 (9,06)
04GR	12	25	74	37	21	13,5	4	11 (10,5)	SGOR 121C	4	13,3	SGOR 12SW	12 (11,15)
05GR	14	25	74	37	21	13,5	4	13	SGOR 141C	5	15,3	SGOR 14SW	14
1GR	16	32	86	43	24	14	6,35	14,8	SGOR 161C	5	17,3	SGOR 16SW	16
2GR	18	36	96	48	28	19	8	16	SGOR 181C	6	19,8	SGOR 18SW	18
3GR	20	42	108	54	31	19	8	18	SGOR 201C	6	22,8	SGOR 20SW	20
4GR	22	45	120	60	34	20,5	10	20	SGOR 221C	6	24,8	SGOR 22SW	22
5GR	25	50	132	66	38	20,5	10	23	SGOR 251C	8	28,3	SGOR 25SW	25
6GR	30	58	166	83	49	25	10	28	SGOR 301C	8	33,3	SGOR 30SW	30

Criteria di scelta pag. - Selection criteria page 27