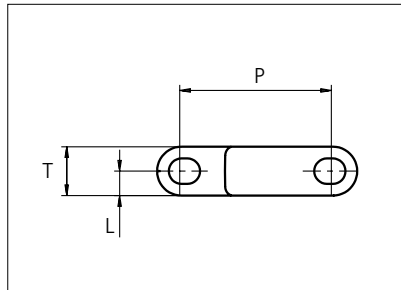


Plastic Modular Belt

Serie **uni L-SNB** Type **36%**



Straight Running
 Nominal pitch: 50.0 mm (1.97 in)
 Surface type: Flat
 Surface opening: 36%
 Backflex radius: 70.0 mm (2.80 in)
 Pin diameter: ø8.0 mm (0.31 in)

Belt material & color	PP W	PP N	mm	in		mm	in	
Pin and lock material & color	PP W PP W	PP W PP N	P (Nominal)	50.0	1.97	L	8.0	0.31
			T	16.0	0.63	-	-	-

Non standard material and color: See uni Material and Color Overview.

Alternative pin and lock materials: Pin: PE **W** SS304 Lock: PP **G**

Belt width		Permissible tensile force (Belt/pin material)		Belt weight (Belt/pin material)		*Min. No. drive sprocket per shaft	Number of wear strips (Min. No.)	
		PP		POM-LF			**Carry (pcs)	**Return (pcs)
mm	in	N	lbf	kg/m	lb/ft			
153	6.0	2678	602	1.5	1.01	2	2	2
229	9.0	4009	901	2.2	1.51	2	2	2
305	12.0	5340	1200	3.0	2.01	3	3	2
381	15.0	6671	1500	3.7	2.51	3	3	2
457	18.0	8003	1799	4.5	3.01	4	4	2
533	21.0	9334	2098	5.2	3.51	4	4	2
609	24.0	10665	2398	6.0	4.01	5	5	3
686	27.0	11996	2697	6.7	4.51	5	5	3
762	30.0	13328	2996	7.5	5.02	6	6	3
838	33.0	14659	3295	8.2	5.52	6	6	3
914	36.0	15990	3595	9.0	6.02	7	7	4
990	39.0	17322	3894	9.7	6.52	7	7	4

Additional standard belt widths are available in steps of 76.1 mm (3.00 in.)

1980	78.0	34650	7789	19.4	13.04	14	14	7
------	------	-------	------	------	-------	----	----	---

Additional standard belt widths are available in steps of 76.1 mm (3.00 in.)

2969	116.9	51958	11680	29.1	19.55	20	20	10
------	-------	-------	-------	------	-------	----	----	----

General belt tolerance is +0/-0.4% at 23°C/73°F and 50% RH. For exact belt width contact Customer Service. Non standard belt width on request.

*Max. Load per Drive Sprocket. Belt material PP with snub roller 2000 N (450 lbf), PP without snub roller 1250 N (281 lbf)

**Max. Spacing between wear strips, Carry: 152 mm (6 in.) ; Return: 304 mm (12 in.)

***Load capacity per row of reinforcement links in the belt: 2500 N (562 lbf)

***Example: Belt with 8 rows of reinforcement links, permissible load is 8 x 2500 N (562 lbf) = 20000 N (4496 lbf)

Any questions? Please contact us.

Morskate Aandrijvingen BV
 Oosterveldsingel 47A
 7558 PJ Hengelo (Ov)
 The Netherlands

NL
 T +31 (0)74 - 760 11 11
 info@morskateaanrijvingen.nl
 www.morskateaanrijvingen.nl

DE
 T +49 692 - 222 34 95
 info@morskateantriebstechnik.de
 www.morskateantriebstechnik.de

EN
 T +31 (0)74 - 760 11 11
 info@morskatedrivetechnology.com
 www.morskatedrivetechnology.com

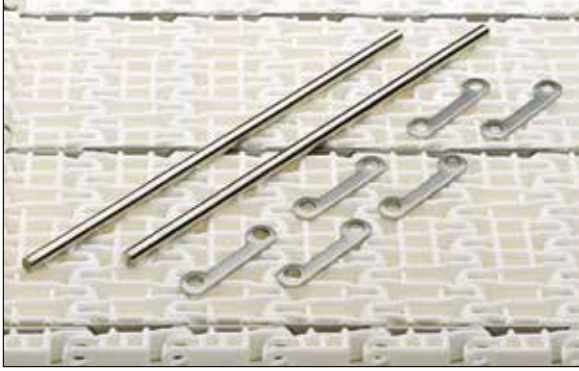
STANDARD

STRAIGHT RUNNING

PITCH 50.0 MM/1.97 IN

Accessories

Reinforcement Link



The use of uni-chains belts with the SS reinforcement /pitch control links in blanchers, cookers and other high temperature applications will reduce belt elongation due to temperature by more than 90%. This will simplify the belt take-up system and reduce maintenance.

uni-chains recommends three reinforcement links per K1200 module.

Note: Reinforcement links require the use of SS pins.

Type	Material & color	N/row	Lbf/row
Steel Link	SS316	2500	562

Non Standard material and color: See uni Material and Color Overview.

Any questions? Please contact us.

Morskate Aandrijvingen BV

Oosterveldsingel 47A
7558 PJ Hengelo (Ov)
The Netherlands

NL

T +31 (0)74 - 760 11 11
info@morskateaandrijvingen.nl
www.morskateaandrijvingen.nl

DE

T +49 692 - 222 34 95
info@morskateantriebstechnik.de
www.morskateantriebstechnik.de

EN

T +31 (0)74 - 760 11 11
info@morskatedrivetechnology.com
www.morskatedrivetechnology.com

Sprocket

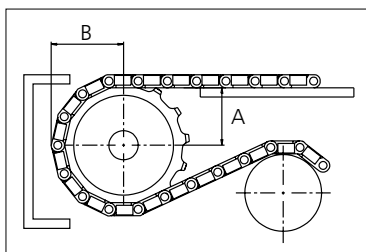
No of teeth	Bore size												Overall diameter		Pitch-diameter		Hub-diameter		A-dimension		B-dimension		Single row/One way	Double row/Two way	Material		
	Pilot bore		0.75	0.78	0.98	1.00	1.18	1.25	1.50	1.57	2.36	2.50													3.54	Molded	Machined
	mm	in											PA6	PA6 LG													
Z06	x					●	●	■	●					92.5	3.64	100.0	3.94	70.0	2.76	35.3	1.39	58.0	2.28	x		x	
Z08	x					●	●	■	●					128.7	5.07	130.7	5.15	70.0	2.76	52.4	2.06	73.3	2.89	x		x	
Z10	x					●	●	■	●					159.8	6.29	161.8	6.37	70.0	2.76	68.9	2.71	88.9	3.50	x		x	
Z10											■			159.8	6.29	161.8	6.37	120.0	4.72	68.9	2.71	88.9	3.50	x			x
Z12	x					●		■	●					192.5	7.58	193.2	7.61	70.0	2.76	85.3	3.36	104.6	4.12	x		x	
Z12											■			192.5	7.58	193.2	7.61	120.0	4.72	85.3	3.36	104.6	4.12	x			x
Z16	x					●		■	●			■		257.3	10.13	256.3	10.09	120.0	4.72	117.7	4.63	126.1	4.96	x			x

■ Molded sprocket

● Molded sprocket

■ Machined sprocket

● Machined sprocket



Other sprocket sizes are available upon request.
 Two-part sprocket are available upon request.
 Round bores are always delivered with keyway.
 Other bore sizes are available upon request.
 uni Retainer Rings: See uni Retainer Ring data sheet
 Width of tooth = 7.0 mm (0.28 in)
 Width of sprocket = 42.3 mm (1.67 in)

Max load per sprocket shown does not take bore size into account.
 Please also ensure that sufficient size shaft is chosen for corresponding load.

For correct sprocket position: See uni Assembly Instructions for uni L-SNB.
 For more detailed sprocket information, contact Customer Service.

Non standard material and color: See uni Material and Color Overview.

Any questions? Please contact us.

Morskate Aandrijvingen BV
 Oosterveldsingel 47A
 7558 PJ Hengelo (Ov)
 The Netherlands

NL
 T +31 (0)74 - 760 11 11
 info@morskateaanrijvingen.nl
 www.morskateaanrijvingen.nl

DE
 T +49 692 - 222 34 95
 info@morskateantriebstechnik.de
 www.morskateantriebstechnik.de

EN
 T +31 (0)74 - 760 11 11
 info@morskatedrivetechnology.com
 www.morskatedrivetechnology.com