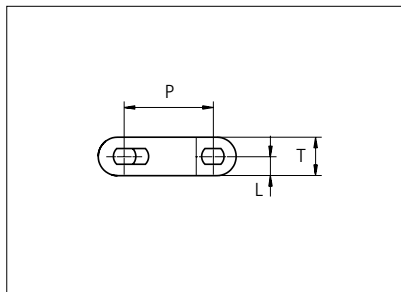
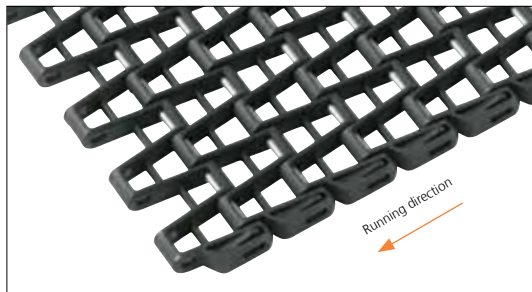


Plastic Modular Belt

Series **uni OWL** Type **66%**



Straight running belt
 Nominal pitch: 27.9 mm (1.10 in)
 Surface type: Flat
 Surface opening: 66%
 Backflex radius: 40.0 mm (1.57 in)
 Pin diameter: \varnothing 4.0 mm (0.16 in)
 Travel in both directions is possible.
 uni-chains recommends this travel direction.

Belt material & color	PA6.6 GFH K	PA6.6 GFH B	PP W	PP B		mm	in		mm	in
	Pin and lock material & color	SS304 PA6.6 GFH K	SS304 PA6.6 GFH B	PBT LG PP W	PBT LG PP B	P (Nominal)	27.9	1.10	T	11.0
					L	5.5	0.22	-	-	-

Non standard material and color: See uni Material and Color Overview.

Alternative pin and lock materials: Pin: PA6.6 **B** PBT **LG** SS304

*Belt width		Permissible tensile force (Belt/pin material)				Belt weight (Belt/pin material)				**Min. No. drive sprocket per shaft	Number of wear strips (Min. No.)	
		PA6.6 GFH/SS		PP/PA6.6		PA6.6 GFH/SS		PP/PA6.6			***Carry (pcs)	***Return (pcs)
mm	in	N	lbf	N	lbf	kg/m	lb/ft	kg/m	lb/ft			
303	11.9	3636	817	2424	545	2.3	1.57	1.4	0.94	3	3	2
337	13.3	4040	908	2693	605	2.6	1.74	1.5	1.04	3	3	2
370	14.6	4443	999	2962	666	2.9	1.92	1.7	1.14	3	3	2
404	15.9	4847	1090	3231	726	3.1	2.09	1.9	1.25	3	3	2
438	17.2	5250	1180	3500	787	3.4	2.26	2.0	1.35	3	3	2
471	18.5	5654	1271	3769	847	3.6	2.44	2.2	1.46	4	4	2
505	19.9	6057	1362	4038	908	3.9	2.61	2.3	1.56	4	4	2
538	21.2	6461	1452	4307	968	4.1	2.79	2.5	1.66	4	4	2
572	22.5	6864	1543	4576	1029	4.4	2.96	2.6	1.77	4	4	2
606	23.8	7268	1634	4845	1089	4.7	3.13	2.8	1.87	5	5	3
639	25.2	7672	1725	5114	1150	4.9	3.31	2.9	1.98	5	5	3
673	26.5	8075	1815	5383	1210	5.2	3.48	3.1	2.08	5	5	3
707	27.8	8479	1906	5652	1271	5.4	3.66	3.3	2.18	5	5	3

Standard Increments in belt width : 33.6 mm (1.32 in.)

1984	78.1	23808	5352	15872	3568	15.3	10.27	9.1	6.13	14	14	7
------	------	-------	------	-------	------	------	-------	-----	------	----	----	---

Standard Increments in belt width : 33.6 mm (1.32 in.)

2993	117.8	35916	8074	23944	5383	23.0	15.49	13.8	9.25	20	20	10
------	-------	-------	------	-------	------	------	-------	------	------	----	----	----

*The belt width in PA6.6 GFH is 1% wider than the belt width in the table

**Max. Load per Drive Sprocket. Belt material: PA6.6 GFH 1200 N (270 lbf), PP 800 N (180 lbf)

***Max. Spacing between wear strips, Carry: 152 mm (6 in.) ; Return: 304 mm (12 in.)

Any questions? Please contact us.

Morskate Aandrijvingen BV
 Oosterveldsingel 47A
 7558 PJ Hengelo (Ov)
 The Netherlands

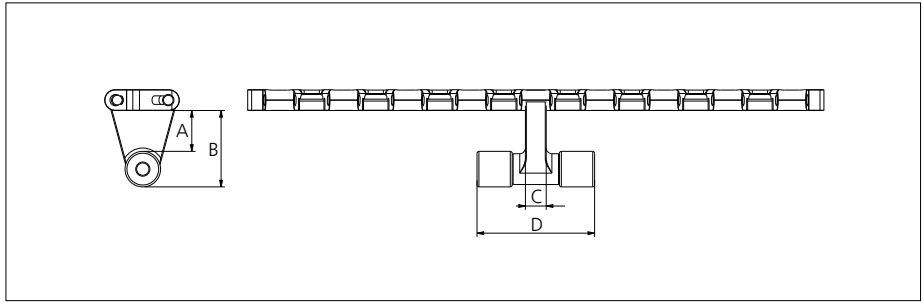
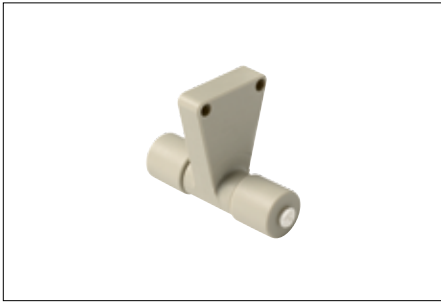
NL
 T +31 (0)74 - 760 11 11
 info@morskateaandrijvingen.nl
 www.morskateaandrijvingen.nl

DE
 T +49 692 - 222 34 95
 info@morskateantriebstechnik.de
 www.morskateantriebstechnik.de

EN
 T +31 (0)74 - 760 11 11
 info@morskatedrivetechnology.com
 www.morskatedrivetechnology.com

Accessories

Tab/NON STANDARD



Type	Belt material & color	A		B		C		D	
		mm	in	mm	in	mm	in	mm	in
Bottom Hold Down	PP W	23.6	0.93	42.6	1.68	11.0	0.43	63.5	2.50

Non Standard material and color: See uni Material and Color Overview.

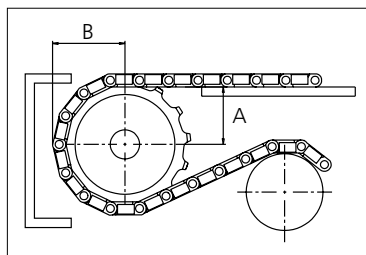
Sprocket

No of teeth	Bore size													Overall diameter		Pitch-diameter		Hub-diameter		A-dimension		B-dimension		Single row/One way	Double row/Two way	Molded	Machined
	Pilot bore																										
	mm	in	0.75	0.78	0.98	1.00	1.18	1.25	1.50	1.57	2.36	2.50	3.54	mm	in	mm	in	mm	in	mm	in	mm	in	PA6	LG	PA6	N
29				■	●	●	●		●				82.7	3.26	80.2	3.16	63.7	2.51	32.8	1.29	46.4	1.83	x			x	
Z11					●	●	●	■	●				101.0	3.98	97.9	3.85	82.0	3.23	42.0	1.65	55.1	2.17	x			x	
Z13					●	●	●	■	●				119.2	4.69	115.6	4.55	100.2	3.94	51.1	2.01	63.8	2.51	x			x	
Z15						●	●	●	●	■			137.3	5.41	133.4	5.25	118.3	4.66	60.1	2.37	72.6	2.86	x			x	

■ Machined sprocket



● Machined sprocket



Other sprocket sizes are available upon request.
 Two-part sprocket are available upon request.
 Round bores are always delivered with keyway.
 Other bore sizes are available upon request.
 uni Retainer Rings: See uni Retainer Ring data sheet.
 Width of tooth = 12.5 mm (0.49 in)
 Width of sprocket = 30.0 mm (1.18 in)

Max load per sprocket shown does not take bore size into account.
 Please also ensure that sufficient size shaft is chosen for corresponding load.

For correct sprocket position: See uni Assembly Instructions for uni OWL.
 For more detailed sprocket information, contact Customer Service.

Non standard material and color: See uni Material and Color Overview.

Any questions? Please contact us.