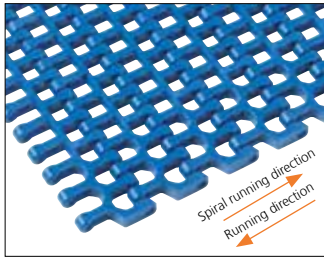
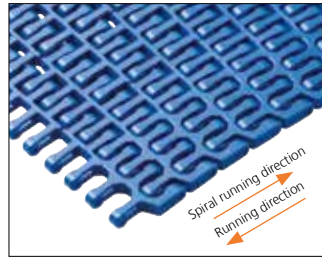


Plastic Modular Belt

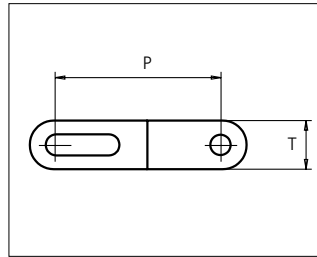
Series uni Flex L-ASB



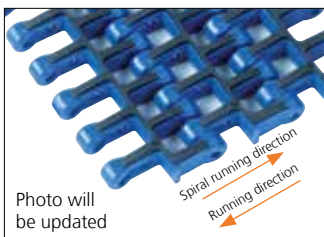
uni Flex L-ASB R1.6
Surface Opening: 50%



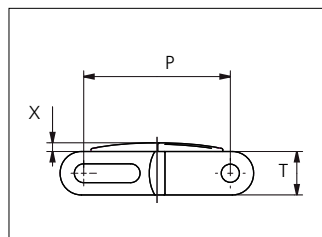
uni Flex L-ASB R2.2
Surface Opening: 47%



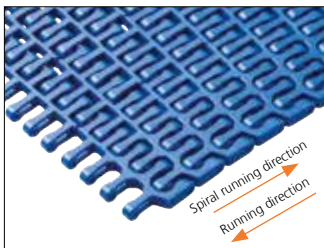
Sideflexing belt
Nominal pitch: 50.8 mm (2.00 in)
Surface type: Flat
Surface opening: 47%/50%
Backflex radius: 100.0 mm (3.94 in)
Pin diameter: $\varnothing 6$ mm (0.24 in)
Min. inside radius: R1.6 x belt width, R2.2 x belt width



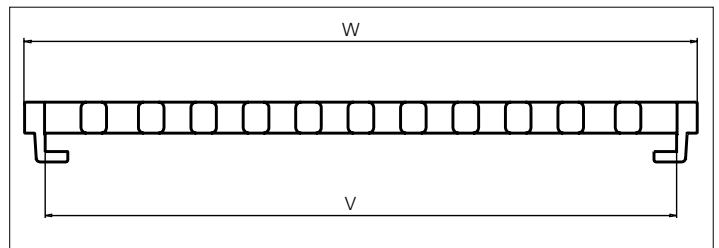
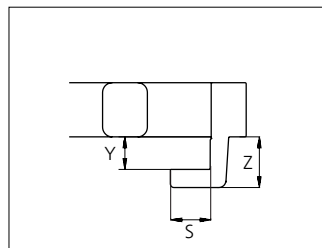
uni Flex L-ASB Rubber Top R2.2



uni Flex L-ASB R2.2 Rubber Top: Indent min. 71.0 mm (2.80 in) and Increment 25.4 mm (1.00)
uni Flex L-ASB R1.6 Rubber Top: Indent min. 97.0 mm (3.82 in) and Increment 25.4 mm (1.00 in).



uni Flex L-ASB Tab R2.2
Surface Opening: 50%



Type	Belt materials and colors	Pin materials and colors	P (Nominal)	mm	in	W	mm	in
uni Flex L-ASB R2.2 uni Flex L-ASB Tab R2.2 uni Flex L-ASB R1.6	POM-D B	PA6.6 B	P	50.8	2.00	W	325.9	12.83
	PP B W		S	11.0	0.43	X	3.0	0.12
uni Flex L-ASB Rubber Top R2.2 uni Flex L-ASB Rubber Top Tab R2.2 uni Flex L-ASB Rubber Top R1.6	PP B + 03 K		T	15.0	0.59	Y	9.0	0.35
			V	306.5	12.07	Z	14.0	0.55

Non standard material and color: See uni Material and Color Overview.

Alternative pin and lock materials:

⚡ Snap Pin A1: PP **W** PBT **LG** PA6.6 **B**

⚡ Lockpin: PBT **W** **LG**

Belt width		Permissible tensile force (Belt/pin material)								Belt weight (Belt/pin material)				*Min. No. drive sprocket per shaft	Number of wear strips (Min. No.)	
		POM-D/PA6.6				PP/PA6.6				POM-D/PA6.6		PP/PA6.6			**Carry (pcs)	**Return (pcs)
		Straight sections		Curve sections		Straight sections		Curve sections		kg/m	lb/ft	kg/m	lb/ft			
mm	in	N	lbf	N	lbf	N	lbf	N	lbf	kg/m	lb/ft	kg/m	lb/ft			
325	12.8	13016	2926	2440	549	6508	1463	1440	324	3.2	2.14	2.0	1.31	3	3	2
402	15.8	16064	3611	2440	549	8032	1806	1440	324	3.9	2.64	2.4	1.62	3	3	2
478	18.8	19112	4296	3110	699	9556	2148	1960	441	4.7	3.15	2.9	1.93	5	4	2
554	21.8	22160	4982	3110	699	11080	2491	1960	441	5.4	3.65	3.3	2.23	5	4	2
630	24.8	25208	5667	3110	699	12604	2833	1960	441	6.2	4.15	3.8	2.54	5	5	3
706	27.8	28256	6352	3110	699	14128	3176	1960	441	6.9	4.65	4.2	2.85	5	5	3
783	30.8	31304	7037	3110	699	15652	3519	1960	441	7.7	5.15	4.7	3.16	7	6	3
859	33.8	34352	7722	3110	699	17176	3861	1960	441	8.4	5.66	5.2	3.46	7	6	3
935	36.8	37400	8408	3110	699	18700	4204	1960	441	9.2	6.16	5.6	3.77	7	7	4
1011	39.8	40448	9093	3110	699	20224	4546	1960	441	9.9	6.66	6.1	4.08	7	7	4
1087	42.8	43496	9778	3110	699	21748	4889	1960	441	10.7	7.16	6.5	4.38	9	8	4
1164	45.8	46544	10463	3110	699	23272	5232	1960	441	11.4	7.66	7.0	4.69	9	8	4

Additional standard belt widths are available in steps of 76.2 mm (3.00 in) Additional non-standard belt widths are available in steps of 25.4 mm (1.00 in)

1697	66.8	67880	15259	3110	699	33940	7630	1960	441	16.6	11.18	10.2	6.84	13	12	6
------	------	-------	-------	------	-----	-------	------	------	-----	------	-------	------	------	----	----	---

Additional standard belt widths are available in steps of 76.2 mm (3.00 in) Additional non-standard belt widths are available in steps of 25.4 mm (1.00 in)

1926	75.8	77040	17319	3110	699	38520	8659	1960	441	18.9	12.68	11.6	7.77	13	13	7
------	------	-------	-------	------	-----	-------	------	------	-----	------	-------	------	------	----	----	---

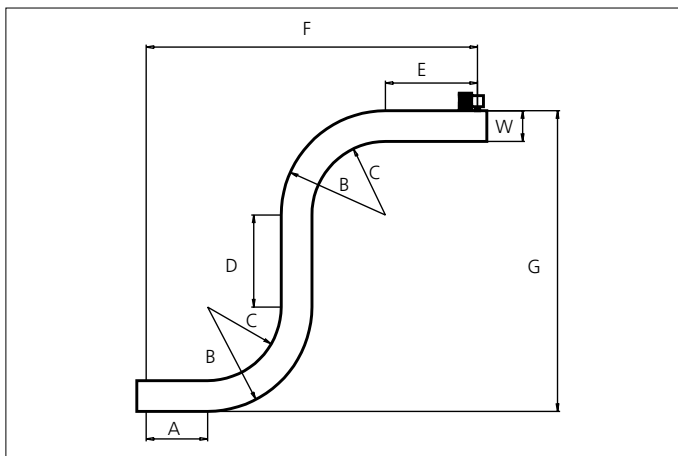
General belt tolerance is +0/-0.4% at 23°C/73°F. For exact belt width contact Customer Service. Non standard belt width on request

*Max. Load per Drive Sprocket. Belt material: POM-D 2500 N (562 lbf), PP 1200 N (270 lbf)

**Max. Spacing between wear strips, Carry: 152 mm (6 in); Return: 304 mm (12 in)

Spiral applications can have different numbers of wearstrips

Design Guidelines

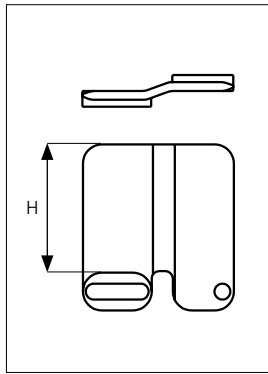


	uni Flex L-ASB R2.2 uni Flex L-ASB Tab R2.2	uni Flex L-ASB R1.6 (inside)
A	min. 1.5 x W	min. 1.5 x W
B	min. 3.2 x W	min. 2.6 x W
C	min. 2.2 x W	min. 1.6 x W
D	min. 2.0 x W	min. 2.0 x W
E	min. 2.0 x W	min. 2.0 x W
F	min. 8.9 x W	min. 7.7 x W
G	min. 8.4 x W	min. 7.2 x W

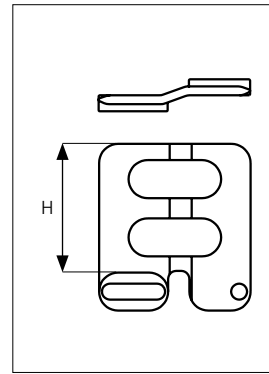
uni Flex L-ASB R1.6 can not be used in S-conveyors.

Accessories

Side Guard



Side Guard Airflow

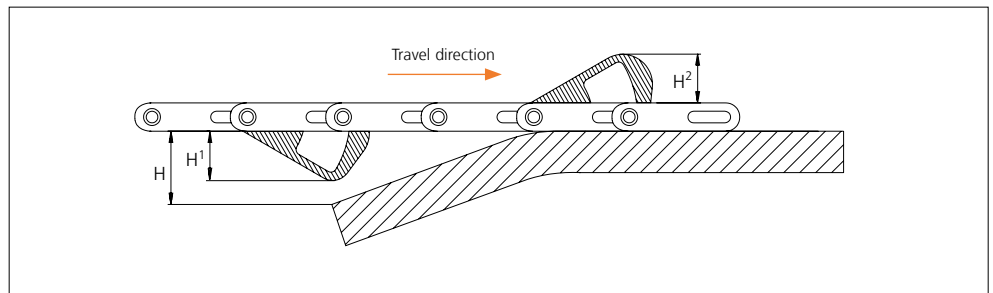


Type	Side Guard Material & color	H	
		mm	in
Side Guard	POM-D B W	10.0	0.39
		25.4	1.00
		50.0	1.97
Side Guard Airflow		50.0	1.97

* Min. indent for Side Guard is: 80.0 mm (3.15 in) and Increment 25.4 mm (1.00 in)
 Non Standard material and color: See uni Material and Color Overview.

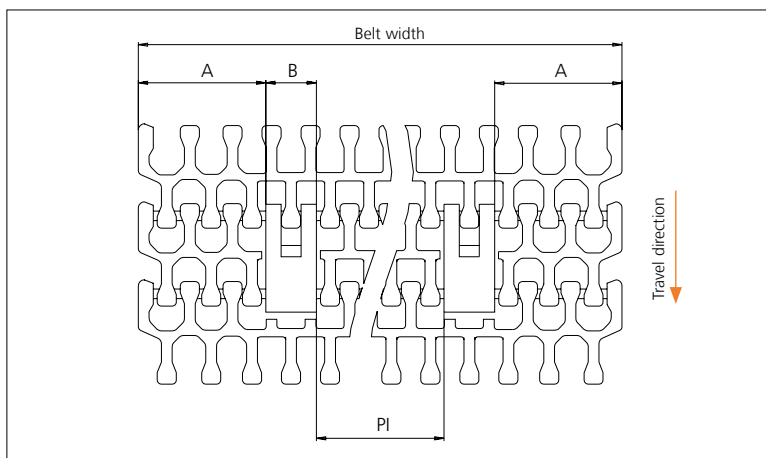
Accessories

AmFlight



Type	Material & color	H	H ¹		H ²	
			mm	in	mm	in
AmFlight	PE W	H > H ¹	25.4	1.00	26.0	1.02

Other Non Standard option: See uni AmFlight Overview.



	mm	in
A min	83.0	3.27
B	33.0	1.30
PI min	68.5	2.70

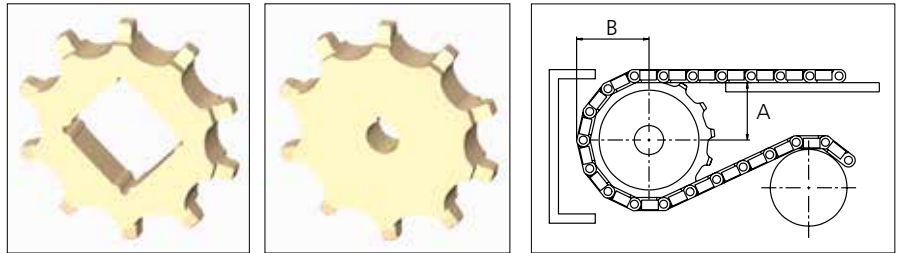
Increment: 25.4 mm (1.00 in)

Sprocket

No of teeth	Bore size													Overall diameter		Pitch diameter		Hub diameter		A-dimension		B-dimension		Single row/Two way	Double row/Two way	Molded PA6 LG	Machined PA6 N
	Pilot Bore	Bore size																									
		mm	in	0.75	0.79	0.98	1.00	1.18	1.25	1.50	1.57	2.36	2.50	3.54	mm	in	mm	in	mm	in	mm	in					
Z08	x					●	●			●				134.6	5.30	131.5	5.18	0.0	0.00	54.4	2.14	74.9	2.95	x			x
Z10	x					●	●	●		●				168.3	6.63	164.0	6.46	0.0	0.00	71.4	2.81	90.8	3.57	x			x
Z12	x					●		●	●	●			■	203.5	8.01	196.5	7.74	0.0	0.00	88.2	3.47	106.8	4.20	x			x
Z15	x					●		●	●	●	●		■	253.4	9.98	245.4	9.66	0.0	0.00	113.2	4.46	131.0	5.16	x			x

■ Machined sprocket

● Machined sprocket



Non standard material and color: See uni Material and Color Overview.

Other sprocket sizes are available upon request
 Two-part sprocket are available upon request
 Other bore sizes are available upon request
 uni Retainer Rings: See uni Retainer Ring data sheet
 Width of tooth = 15.0 mm (0.59 in)
 Width of sprocket = 30.0 mm (1.18 in)

Max load per sprocket shown does not take bore size into account.
 Please also ensure that sufficient size shaft is chosen for corresponding load.

For correct sprocket position: See uni Assembly Instructions for uni Flex L-ASB.
 For more detailed sprocket information, contact Customer Service.

Any questions? Please contact us.